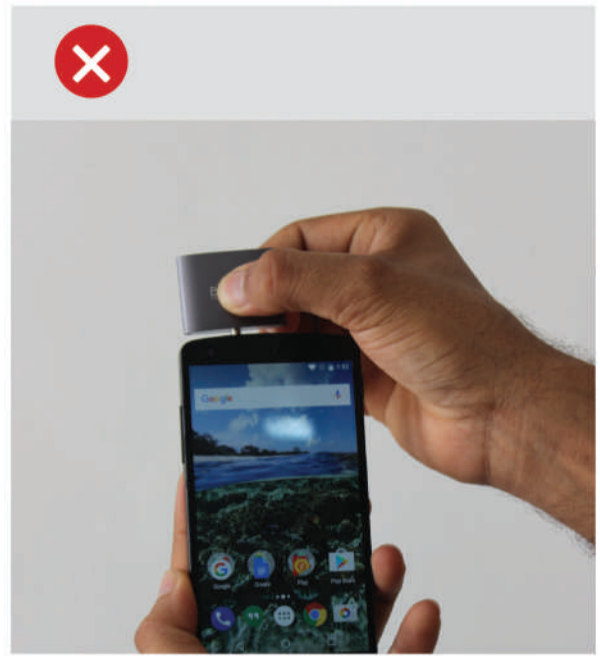
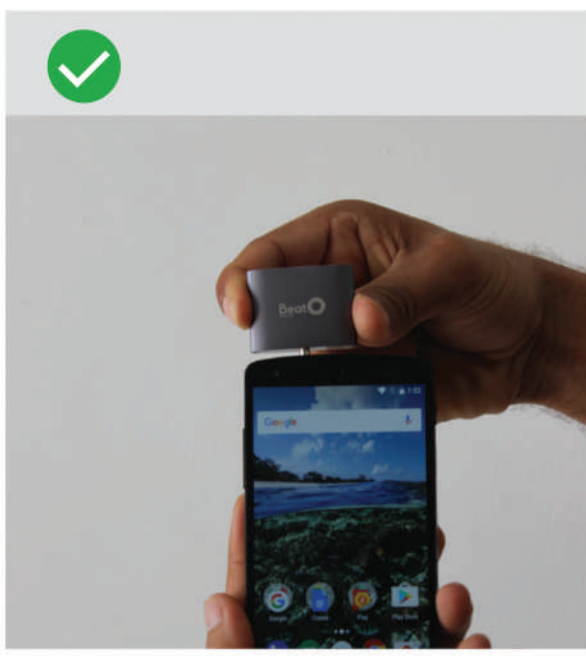


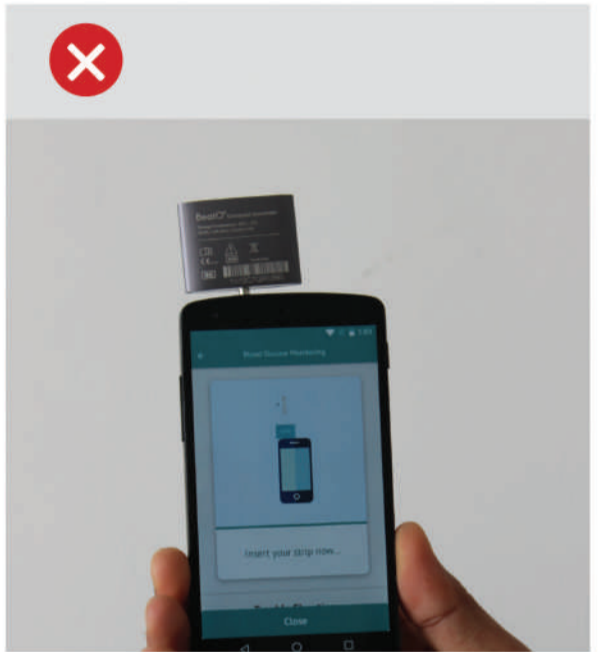
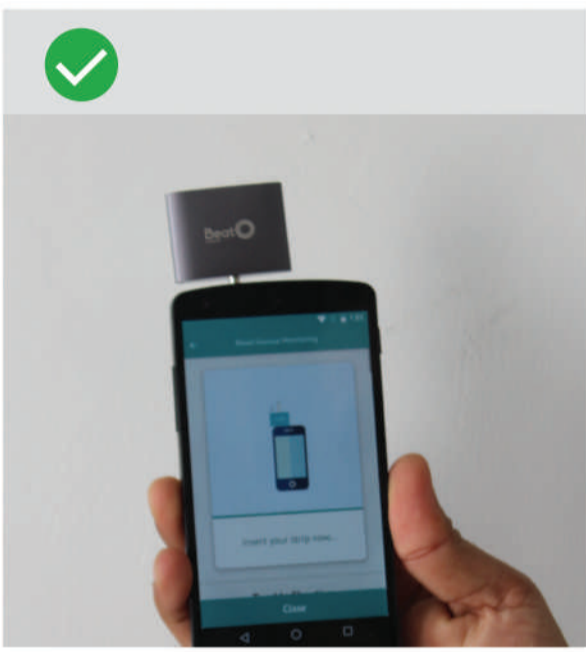
Dos And Don'ts

Handy tips to use your BeatO glucometer correctly

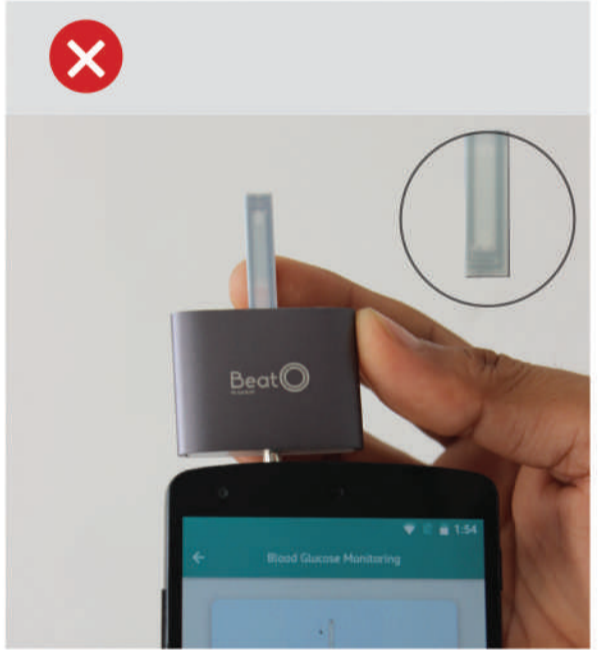
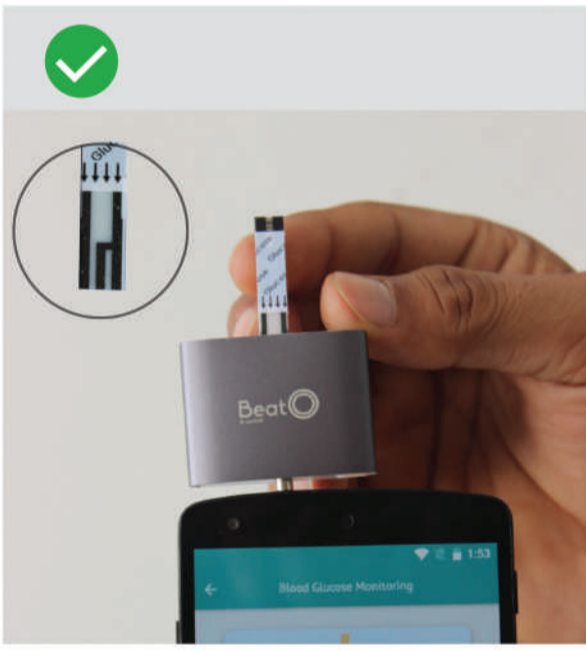
Hold glucometer correctly



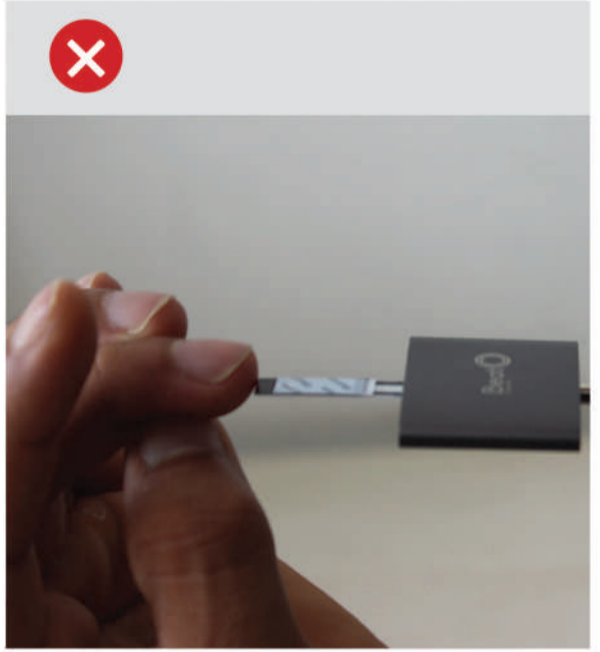
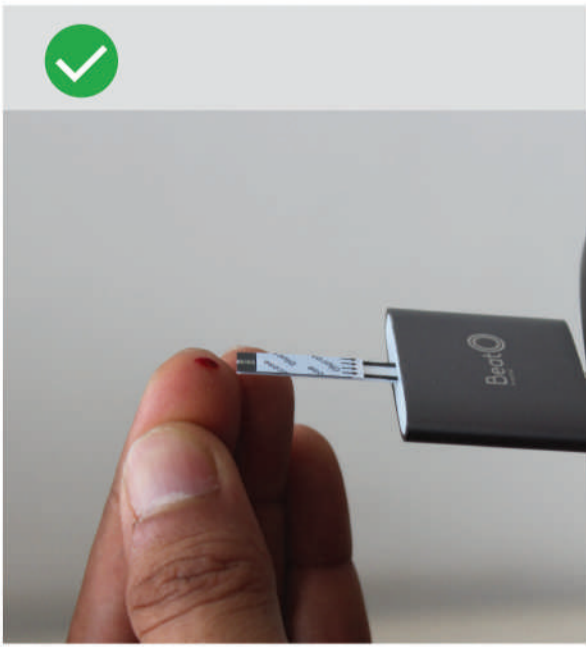
Insert glucometer front-facing in audio jack



Insert strip into the glucometer port, front-facing in arrow direction



Put enough blood on the strip in the correct angle



+91 7863023286
glucosupport@beatoapp.com
www.beatoapp.com

